

Bi-directional Power Monitors

DESCRIPTION

- Compact bi-directional power monitor for the frequency range 140 - 470 MHz.
- PRO-PM2-2/70 is adjusted to give 6 V ±0.5 V at 470 MHz and 10 W input power.
- Typical values of the TX FWD DC voltage as a function of frequency at 10W input power is shown in the figure below.
- The technology used can generate 2. harmonic. Therefore, it is recommended to use low pass filtering on the output.

ORDERING

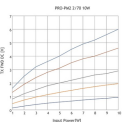
Type	Product No.
PRO-PM2-2/70-10W-N(f)-N(f)	210000974

SPECIFICATIONS

Electrical	
Model	PRO-PM2-2/70-10W
Frequency	140 - 470 MHz
Max. Input Power	10 W
Insertion Loss	Typ. 0.1 dB < 0.3 dB
Impedance	50 Ω
VSWR	< 1.25:1
Mechanical	
Connection(s)	N(f)
Dimensions	90 x 39.5 x 28 mm / 3.54 x 1.56 x 1.10in.
Weight	0.15 kg / 0.33 lb.
Environmental	
Operating Temperature Range	-30 to 60 °C

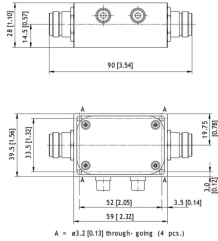


TYPICAL RESPONSE CURVES



The maximum TX FWD DC voltage can be adjusted, if necessary. In that case, new DC voltage vs. power curves must be made again.

MOUNTING DETAILS



All dimensions are given in mm [in.]

